

# Celebrating Farm to School Month in Ann Arbor Public Schools

Presentation to the Board of Education  
October 10, 2018



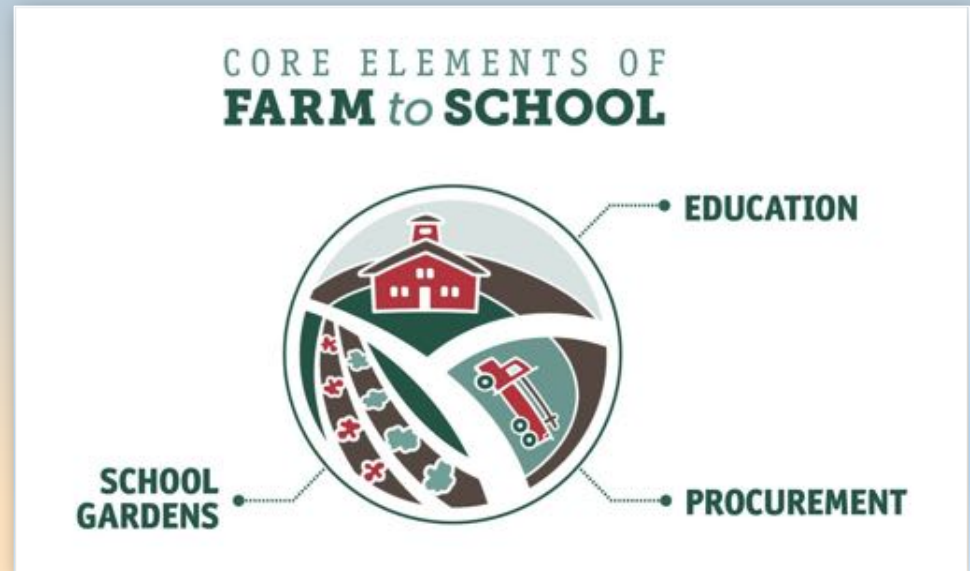
# Tonight's Presentation

- 🍐 Farm to School Month purpose and benefits to students
- 🍐 The AAPS Farm to School Collaborative
- 🍐 Local food tastings, farmers markets, school garden events, and other FTS Month activities in AAPS



# What is Farm to School?

- 🌽 Connects students to local, fresh healthy food
- 🌽 Changes procurement practices
- 🌽 Provides hands-on learning
- 🌽 Educates students, staff, parents and community



# Benefits of Farm to School Programs

## KIDS WIN

Farm to School provides students access to **nutritious, high quality, local food** so they are ready to learn and grow. Farm to school activities enhance classroom education through **hands-on learning** related to nutrition, culinary arts, agriculture and careers

## FARMERS WIN

Through local procurement, Farm to School provides local growers and food producers with **access to institutional markets**

## ADVANCING EQUITY

FTS can provide opportunities to address these **racial and social disparities** in the existing food system

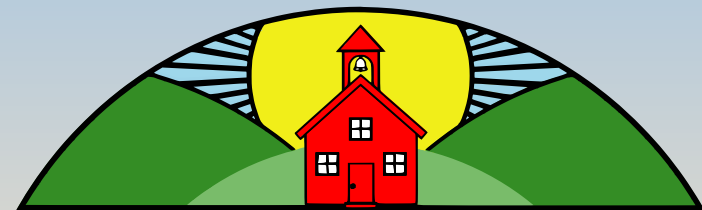
## COMMUNITIES WIN

Farm to School benefits the environment by reducing travel time from grower to buyer, thus **decreasing air pollution and carbon emissions**. It supports the local economy by **creating and sustaining jobs** in agriculture and food production

# AAPS Farm to School Collaborative



FTSC Steering Committee members include teachers, other district staff, parents, non-profit and government partners, and Chartwells



ANN ARBOR PUBLIC SCHOOLS  
FARM TO SCHOOL  
COLLABORATIVE

est. 2006

**MISSION:** Promote student wellness and create connections between local agriculture and AAPS

AAPS Board of Education, October 10, 2018

# U of M Project Healthy Schools

## Elementary Schools

Choice of:

1. FTS Month Gift basket
2. Tasting of local food
3. Trip to farmers market



Allen Elementary



Logan Elementary



Carpenter Apple Tasting



Carpenter Apple Tasting



# U of M Project Healthy Schools

## Middle Schools

After school farmers market  
featuring a variety of free  
locally grown produce



Tappan Middle School after school farmers market

# Farm Fresh Fridays - Chartwells

Every Friday in October, Chartwells is offering free Michigan-grown produce during lunch, district-wide

Chartwells was recently awarded a \$44,000 grant from the State of Michigan to purchase locally grown food



Educational Sign



Mitchell Elementary



Pioneer High School



# Farmer in the Classroom – Agrarian Adventure

Farmer in the Classroom visits feature local farmers, food producers, and food stewards in hands-on lessons about sustainable agriculture. Lessons include organic growing methods, farming/food production as a career, composting, and vermiculture, among other topics

Last year, the program visited 48 classrooms in 12 AAPS schools



# School Garden Spotlight: Lakewood

“Lizard Land” is a 22-bed international garden devoted to plants from different countries. Plant markers are printed in 4 languages spoken at the school

3<sup>rd</sup> graders are studying Native American and Colonial beds as part of their Michigan History unit

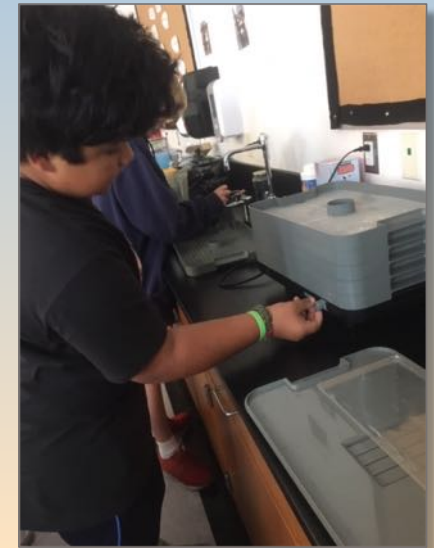
4<sup>th</sup> graders are using Worm Factory in study of decomposers



# School Garden Spotlight: A2STEAM

6<sup>th</sup> grade “STEAM Stewards” are harvesting, prepping and dehydrating vegetables

They’ll combine the dried veggies into soup mixes and donate them to Northside Community Center (See project at Nov. 5 Expo!)



A2 Open student using a food dehydrator



# More School Gardens!



Burns Park Elementary



King Elementary



Slauson Middle School



Haisley Elementary

Elementary, K8 & Middle School Gardens not pictured:  
A2Open, Eberwhite, Lawton, Pittsfield, Tappan,  
Thurston, and Wines.



Forsythe Middle School



Carpenter Elementary

# Thank you!

U of M Project Healthy Schools  
Chartwells Food Service  
The Agrarian Adventure  
School garden coordinators and  
volunteers  
Farm to School Collaborative  
Farm at St. Joe's  
Argus Farm Stop  
Zilke Farm

AAPS Board of Education, October 10, 2018



**M** UNIVERSITY OF MICHIGAN

